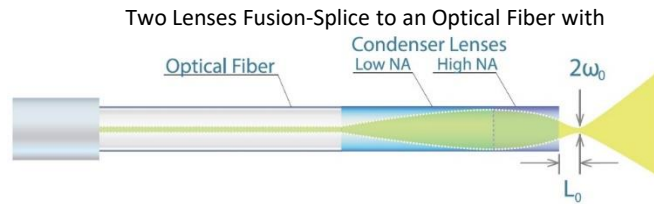


SILICAGRIN

SILICAGRIN Condenser

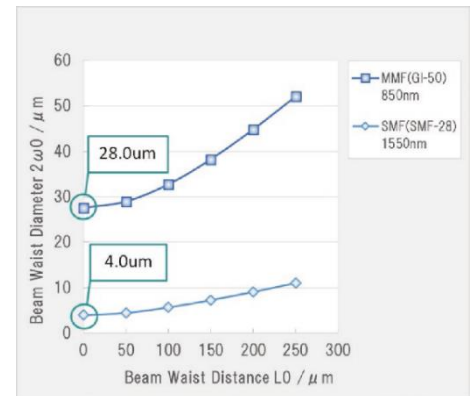
Beam Shape → Short Focalized and Wider



Features

- A serial connection of Low NA and High NA lenses emits a beam with a small focus and a large divergence.
- The reduced focus also makes it suitable for coupling and observations of micro-optical systems.
- Minimum spot size 4.0 μm (@1550nm).
- Custom design available
 - Fiber: SMF, PMF, MMF
 - Zirconia/metal ferrule processing, etc.
 - AR coating, fiber metallization processing

Typical Optical Characteristics (SMF)	
Insertion Loss at fused point	≤ 0.1 dB
Beam Waist Size ($2\omega_0$)	4.0 μm
Beam Waist Distance (L_0)	0 - 50 μm

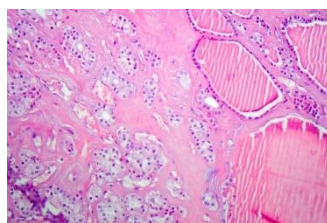


Beam waist diameter by beam waist distance setting value

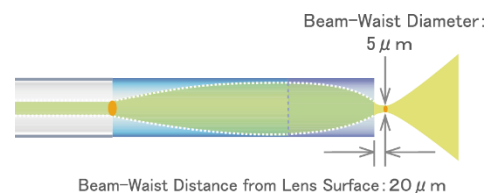
Applications



Optical diagnosis



in vivo microscopy imaging



An example of beam shape with SMF and Condenser (@1550nm)

Toyo Glass Co., Ltd.

Optical Lens Section, Optical Lens Department, Development Division
 12-2 Ogimachi, Kawasaki-ku, Kawasaki-shi, Kanagawa 210-0867, JAPAN
 Web Site: <http://www.toyo-glass.co.jp> Email: kaihatsu_A@toyo-glass.co.jp
 Tel: +81-44-329-1582 Fax: +81-44-329-1584