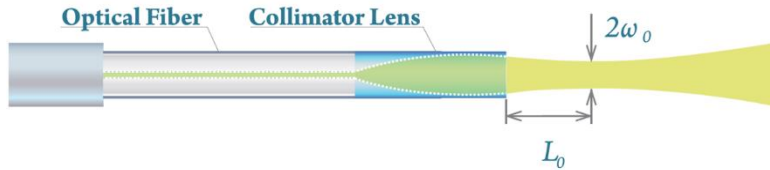


SILICAGRIN

SILICAGRIN Collimator

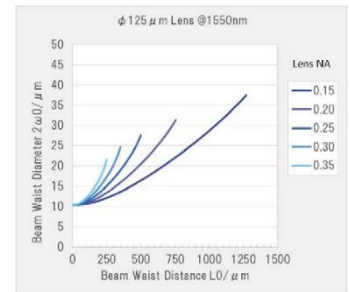
Beam Shape **Thin and Long**

Fusion-Splice to an Optical Fiber with Alignment



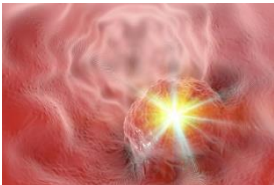
Features

- Beam diameter and beam waist distance can be selected with a wide variety of NA options (graph on the right).
- Suitable for visible to near-infrared wavelengths
- Custom design available
 - Fiber: SMF, PMF, MMF and MCF
 - Zirconia/metal ferrule processing, etc.
 - AR coating, fiber metallization processing



Beam waist diameter by beam waist distance setting value and NAs

Applications



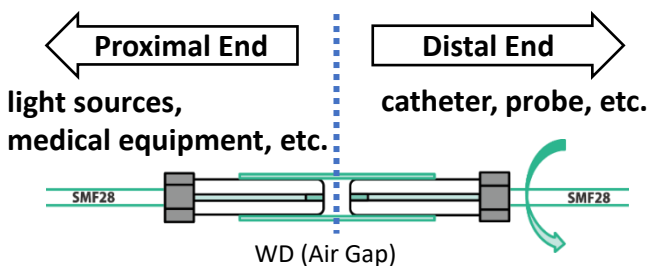
Fiber probes for selective ablation, vaporization, and other treatments.

Typical Beam Shape	
Beam-Waist Distance (mm)	Beam-Waist Diameter (μm)
1.5	50
1.0	36
0.5	20

Lens Diameter: 125 μm , Wavelength: 1550nm, Optical Fiber: SMF (MFD: 10.4 μm)

Typical Coupling Performance	
Insertion Loss (Ave.)	≤ 0.5 dB
Return Loss (Ave.)	≥ 35 dB

Average value of every 90 degree rotation (See left)
WD=1.0mm, Wavelength: 1550nm, PC Polished with AR coating



For non-physical contact connection applications in DIRTY/CLEAN areas of medical optical fiber catheters

Toyo Glass Co., Ltd.

Optical Lens Section, Optical Lens Department, Development Division
12-2 Ogimachi, Kawasaki-ku, Kawasaki-shi, Kanagawa 210-0867, JAPAN
Web Site: <https://www.toyo-glass.co.jp> Email: kaihatsu_A@toyo-glass.co.jp
Tel: +81-44-329-1582 Fax: +81-44-329-1584